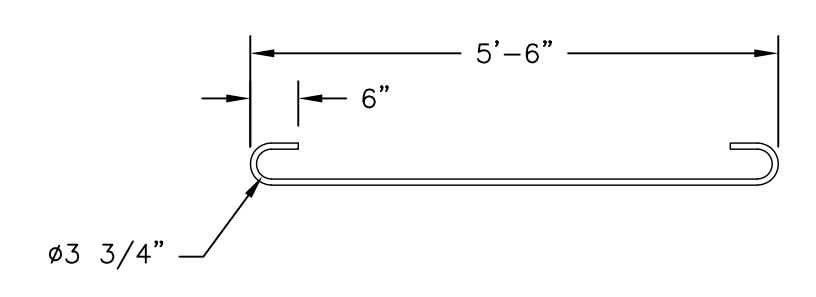
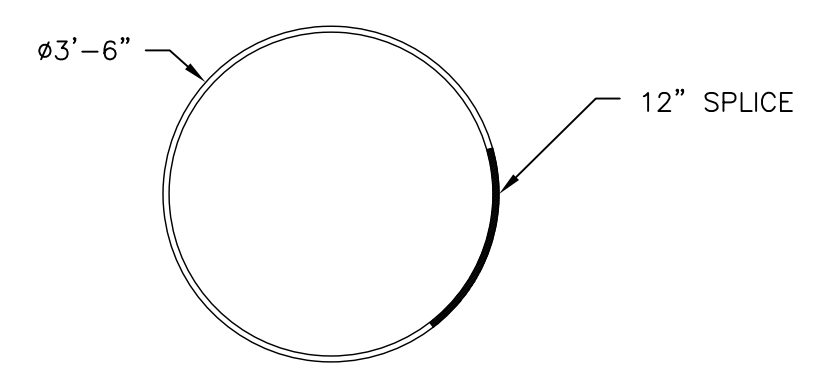


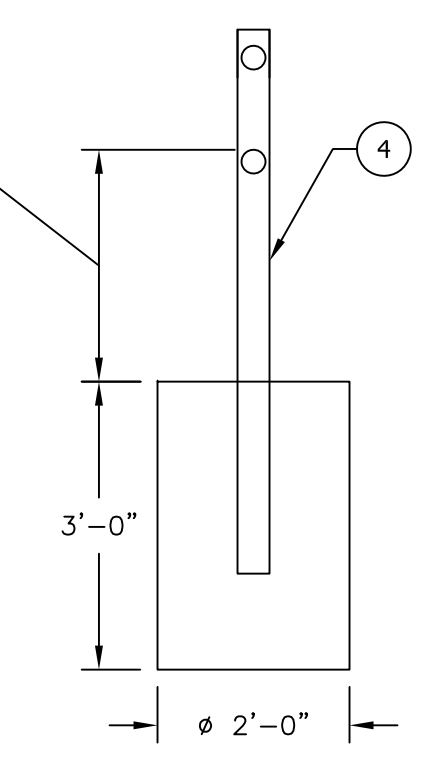
D-1
-
DETAIL VIEW
SCALE: NTS



D-2
-
REBAR DETAIL
SCALE: NTS



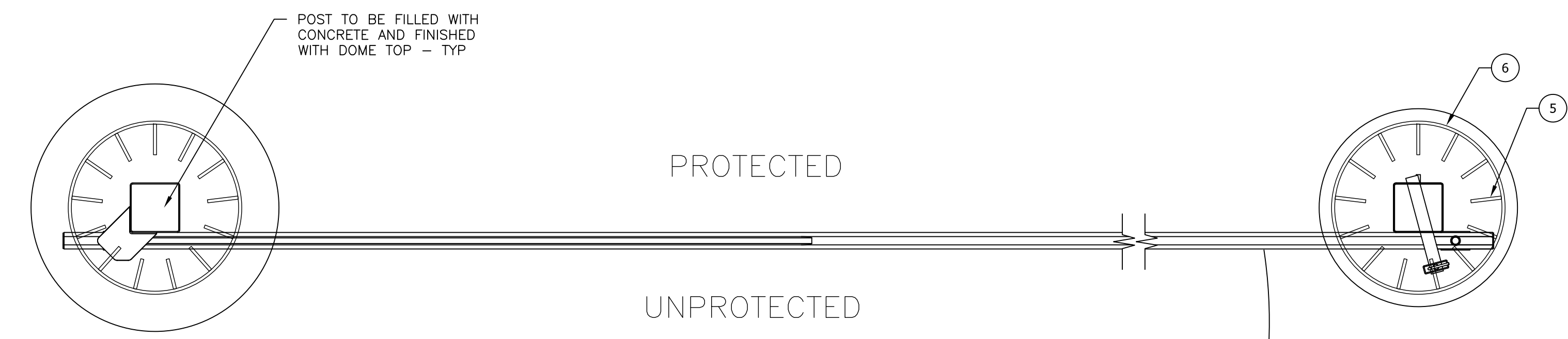
D-3
-
REBAR DETAIL
SCALE: NTS



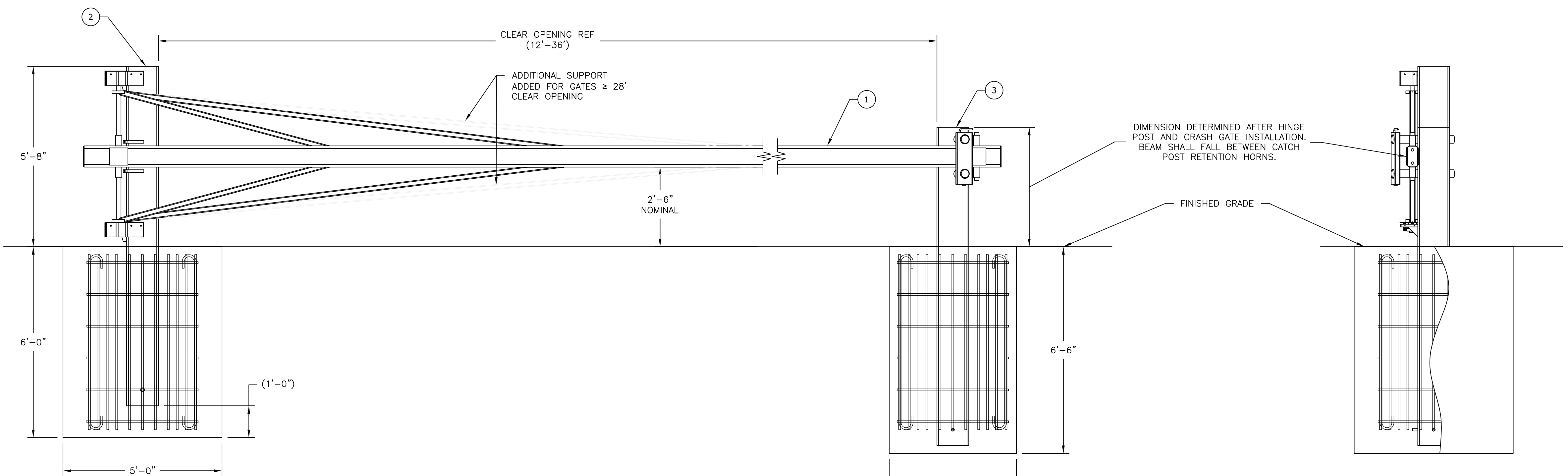
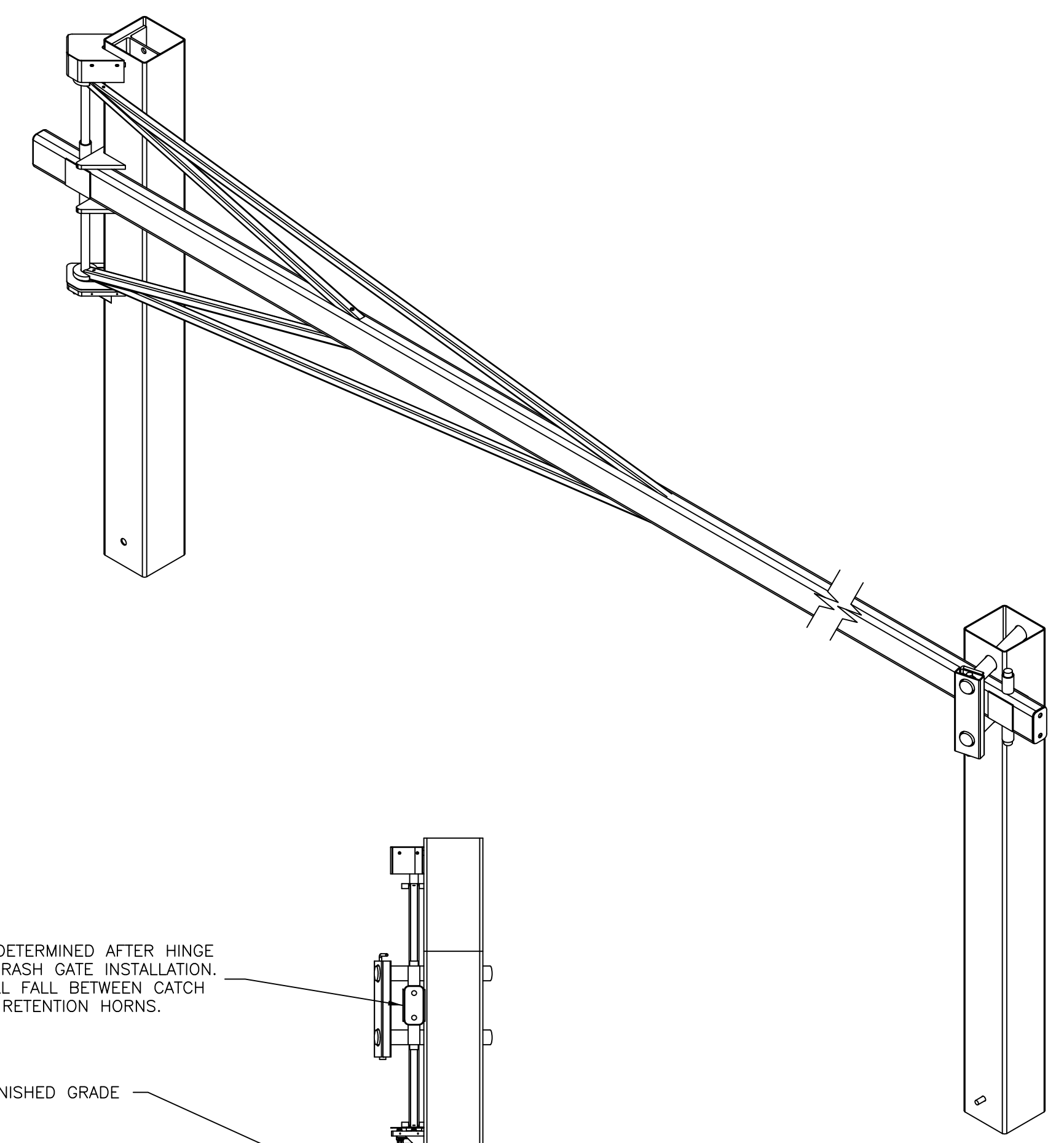
D-4
-
DETAIL VIEW
SCALE: NTS

BILL OF MATERIAL			
PART#	ITEM	QTY	DESCRIPTION
501301-WXX	1	1	CRASH GATE (LENGTH VARY, SEE SITE LAYOUT FOR SPECIFIC LENGTHS)
501302-R	2	1	HINGE POST ASSEMBLY (LEFT)
501303-L	3	1	CATCH POST WELDMENT (LEFT)
501304-W	4	1	CATCH POST WELDMENT (OPEN POSITION)
-	5	26	#6 REBAR ASTM A615 GRADE 60 DEFORMED BAR - SEE DETAIL "D-2"
-	6	12	#6 REBAR ASTM A615 GRADE 60 DEFORMED BAR - SEE DETAIL "D-3"

- NOTES
- SEE SITE SPECIFIC LAYOUTS FOR LEFT AND RIGHT HAND POST INSTALLATION. LEFT HAND POST SHOWN FOR REF, SEE DETAIL D-1 FOR RIGHT HAND DEPICTION.
 - ITEM# 1 & 2 TO BE INSTALLED PRIOR TO INSTALLING ITEM# 3. ITEM# 3 HEIGHT IS DETERMINED BY CRASH GATE HEIGHT. INSTALLER SHALL ENSURE THAT THE SWING GATE WILL CLOSE PROPERLY.
 - TIE 100% REBAR JUNCTIONS.
 - CONCRETE MUST HAVE 3,000 PSI COMPRESSIVE STRENGTH AFTER 28 DAY CURE.



1
-
ELEVATION VIEW
SCALE: NTS

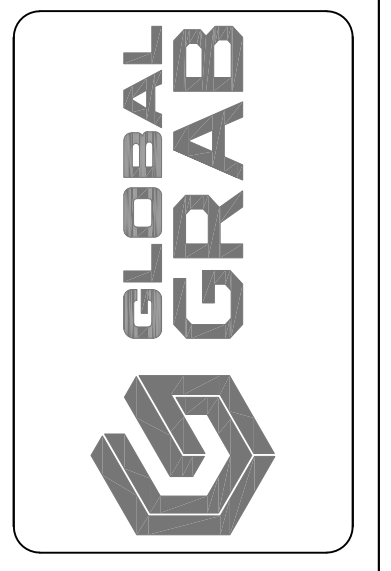


2
-
ELEVATION VIEW
SCALE: NTS

3
-
SIDE ELEVATION VIEW
SCALE: NTS

FOR REFERENCE ONLY
DO NOT BUILD

REV	DATE	DESCRIPTION	BY



DRAWN BY: GGT	CHECKED BY: -	DATE: -	SCALE: AS NOTED
SIZE: ANSI D	DRAWING NUMBER: SAC-01	REV: -	

SINGLE LEAF MANUAL CRASH GATE