



GLOBAL
GRAB

BOLLARDS



Crash Certified Bollards

From a perimeter security, risk mitigation, and anti-terrorism standpoint, bollards that are **ASTM crash-certified** and on the **DoD Anti-Ram Vehicle Barrier List** are designed and manufactured specifically to effectively stop a passenger vehicle or truck up to a specific speed.

These types of bollards are either a requirement or a necessity for many government and commercial entities because of their ability to withstand an intentional or unintentional impact, or terrorist vehicle threat.

Decorative & Non-Crash-Certified Bollards

These types of bollards are oftentimes used to help direct pedestrians and traffic, which provide more of a visual deterrent. While being more decorative and aesthetically pleasing they do help in blocking off sidewalks, alleys, bicycle lanes from vehicle access. However, they **do not provide the same level of protection** that crash-certified bollards do. Global GRAB collaborates with a variety of bollard sleeve and cover manufacturers to provide the decorative look you are looking for.



© Copyright Global GRAB Technologies. All Rights Reserved.

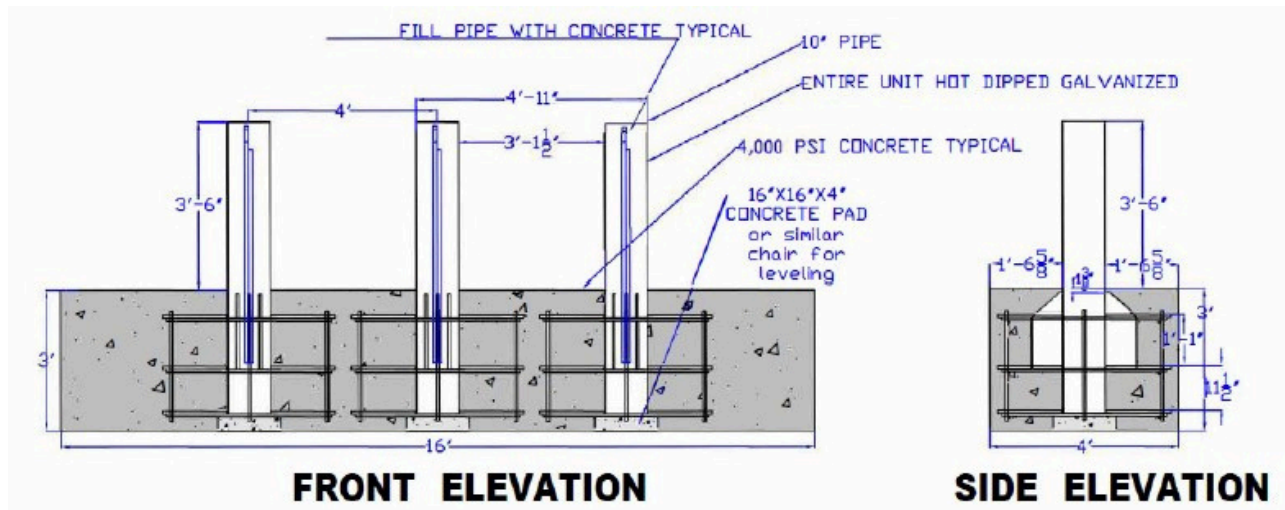


GGT RSSI-M50B Bollard Array

If you are clearly interested in **risk mitigation** and **anti-terrorism benefits** of a crash-certified bollard, Global GRAB's GGT-RSSI M50B bollard array is ASTM M50/P2 crash-certified to stop a 15,000 lb. vehicle traveling at 50 miles per hour, and is on the DoD Anti-Ram Vehicle Barrier List.

The GGT RSSI-M50B Bollard Array are hot dipped galvanized with the following options available:

- Stainless Steel Sleeves
- 10" Decorative Bollard Sleeves
- Powered Coated for Any RAL Color
- Custom Vinyl Wraps



GGT RSSI-M50B Bollard Array Specs

- Height: 42 inches above grade
- Weight: Each bollard assembled weighs 1405 lbs.
- Bollard Spacing: 4 ft. on center
- Foundation: 16 ft. L x 4 ft. W x 3 ft. H
- Test Configuration: Array of 3 bollards